

How To Change The Administrator On Windows 10

We show you 5 different ways



Written by: Elsie Otachi

Posted on: August 12th, 2020 in: <https://helpdeskgeek.com/windows-10/how-to-change-the-administrator-on-windows-10/>

Windows 10 has the Standard user account and the Administrator account, each with different privileges to use a device and applications.

An administrator account offers complete system control with privileges such as access to all files on the device. You can also modify other user accounts and change them to Standard or Administrator, install software and hardware, change security settings, and execute elevated tasks.

However, if you got locked out of your computer, forgot your administrator password, or your admin rights were accidentally revoked, you can't make any changes on the device.



The Standard user account on the other hand is more restrictive. Standard users can work with apps and change settings that won't affect other user accounts. Unlike administrators, Standard users cannot install new apps. Plus, if they have to execute an elevated task, they'll need administrative credentials to complete it.

There are different reasons why you may want to change the administrator on Windows 10. For example, if you're handing over the device to someone else, or you want to add someone else as an administrator and become a Standard user yourself. Windows 10 includes different ways for you to change the administrator, which we'll explain in this guide.

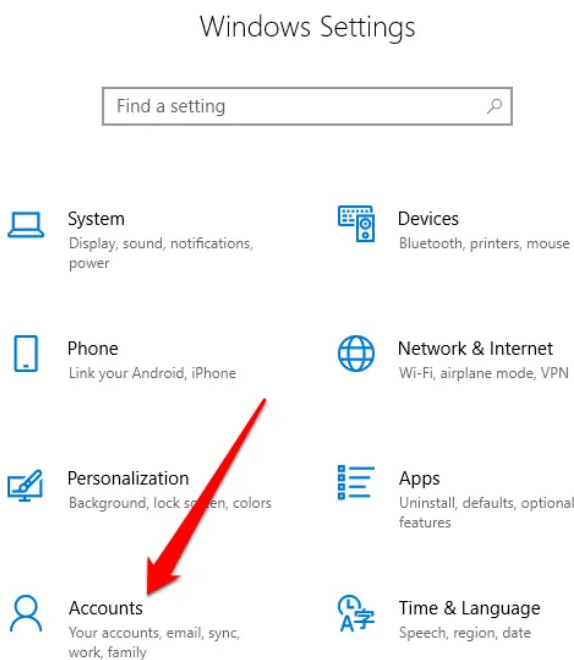
How To Change The Administrator On Windows 10

There are five different ways to change the administrator on Windows 10. You can use:

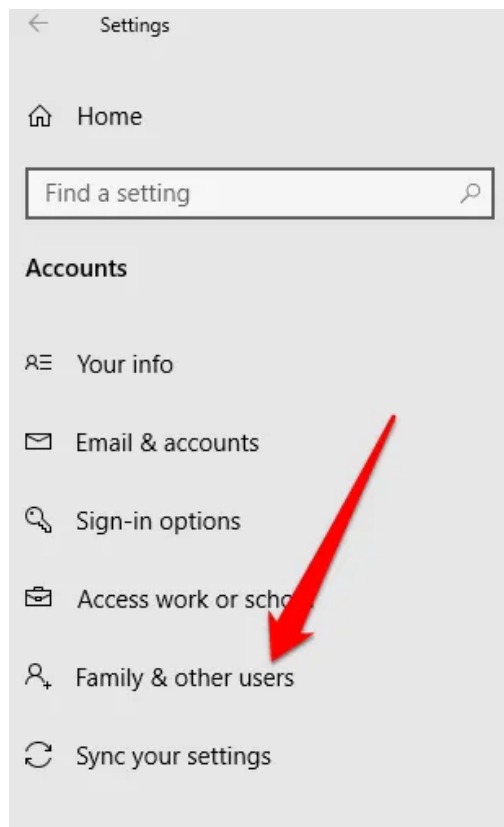
- Settings.
- Control Panel.
- User Accounts.
- PowerShell.
- Command Prompt.

How To Change Windows 10 Administrator Using Settings

1. Click **Start > Settings** and select **Accounts**.

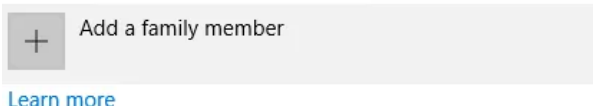


2. Click **Family & other users**.



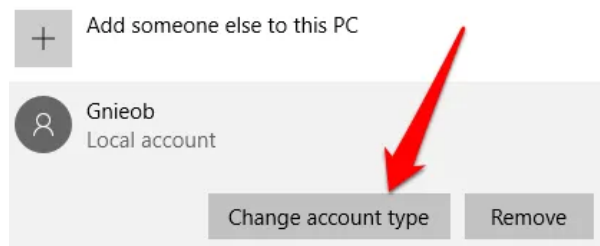
3. Click on the user account and select **Change account type**.

Family & other users

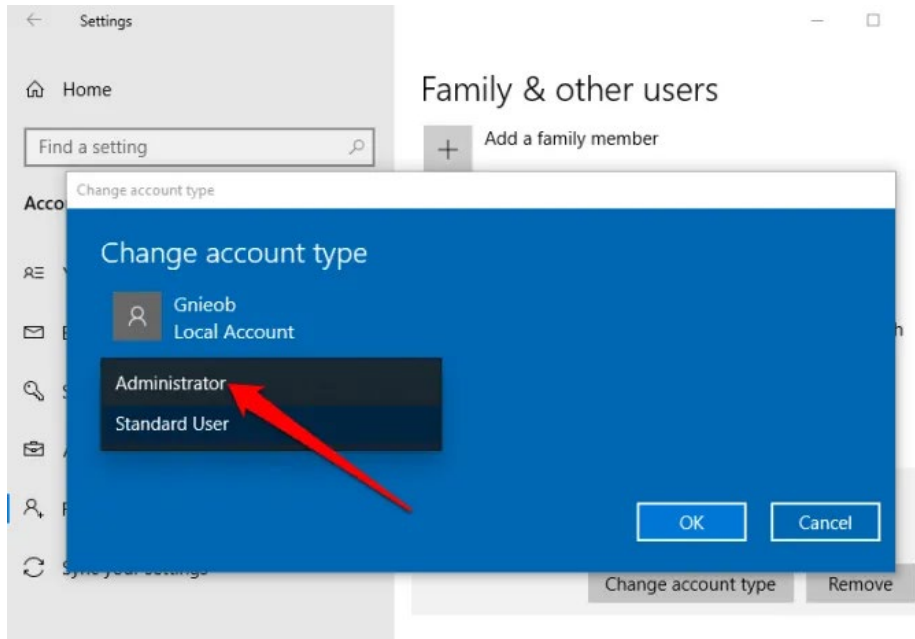


Other users

Allow people who are not part of your family to sign in with their own accounts. This won't add them to your family.



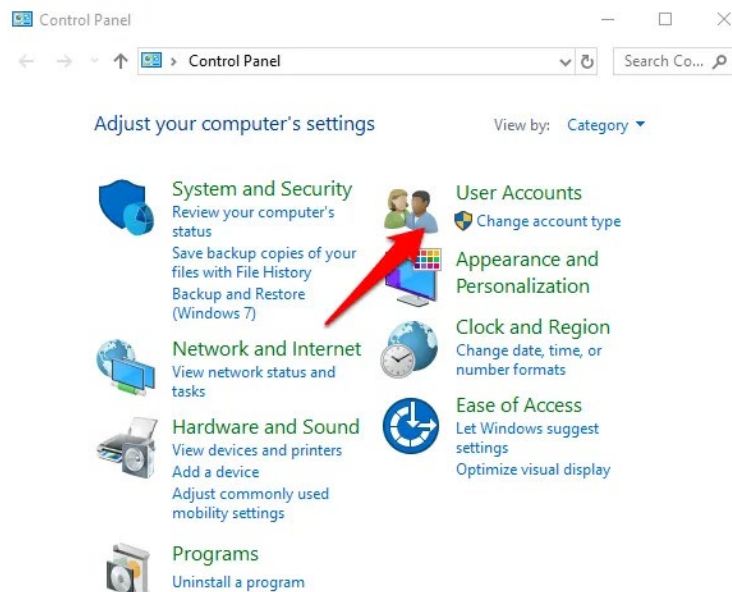
4. Select the **Administrator** account type and then click **OK**.



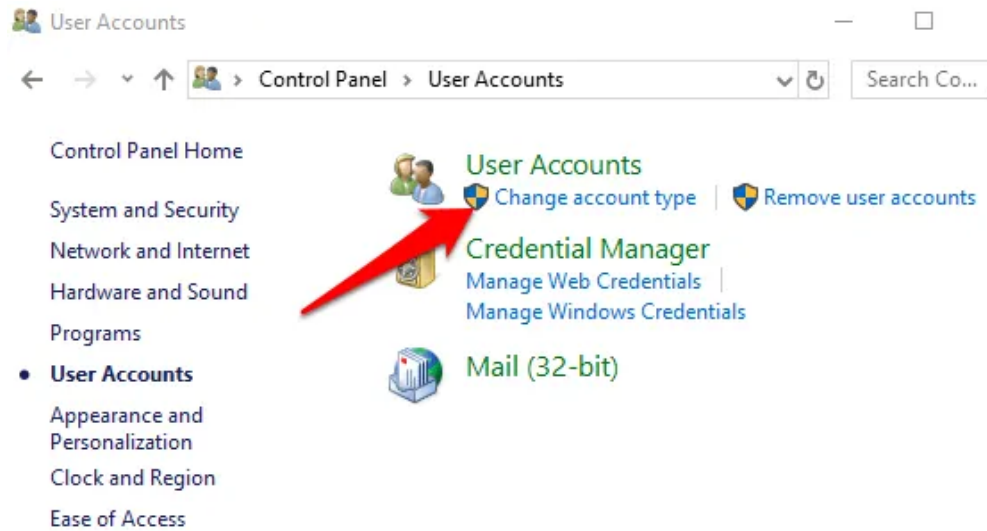
5. Restart your computer to effect the change and start using the account with the administrator privilege level.

How To Change The Administrator On Windows 10 Using Control Panel

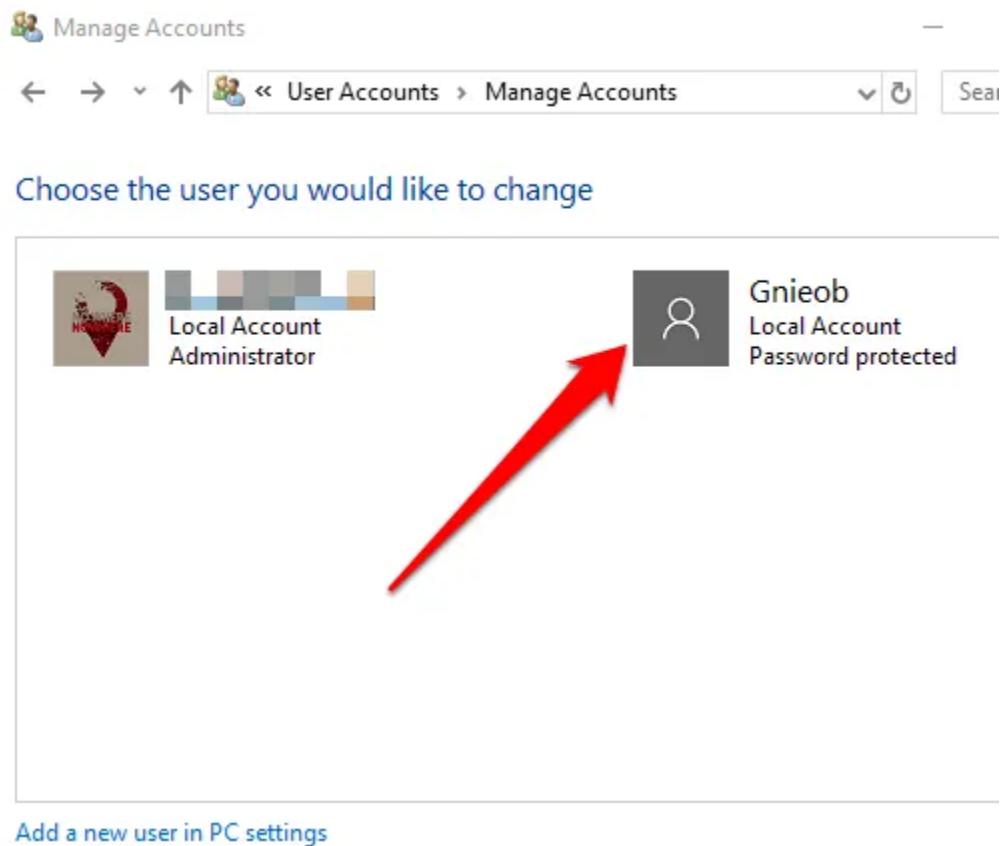
1. Click **Start**, select **Control Panel** and go to the **User Accounts** section.



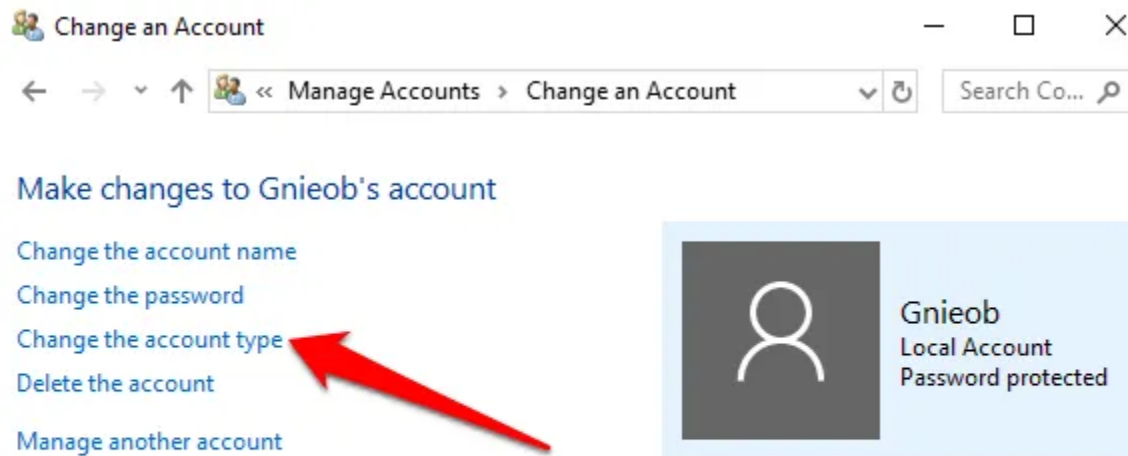
2. Click on the account you want to change and select **Change the account type**.



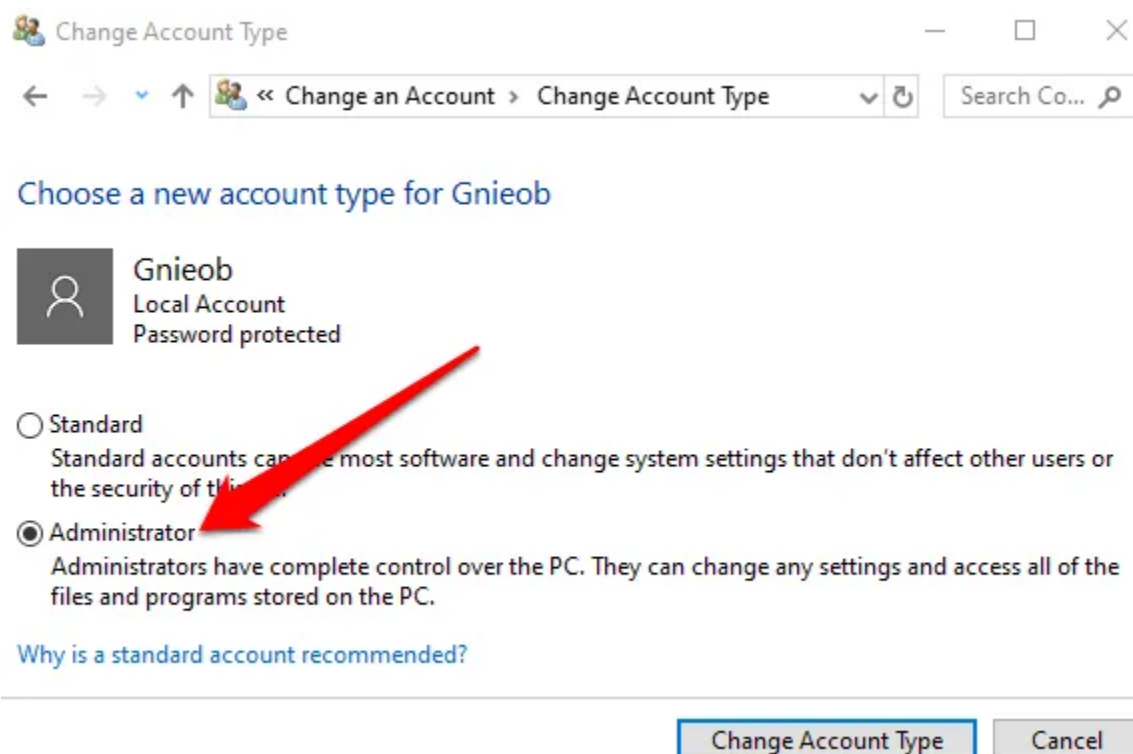
3. Choose the user account you'd like to change to administrator.



4. Click the **Change Account Type** link on the left.



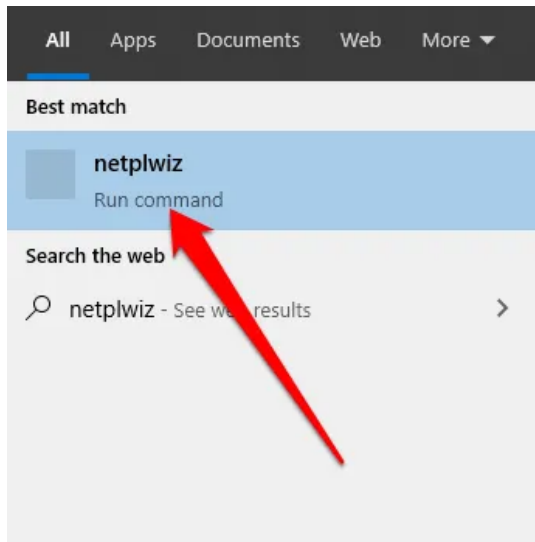
5. Select **Standard** or **Administrator** account



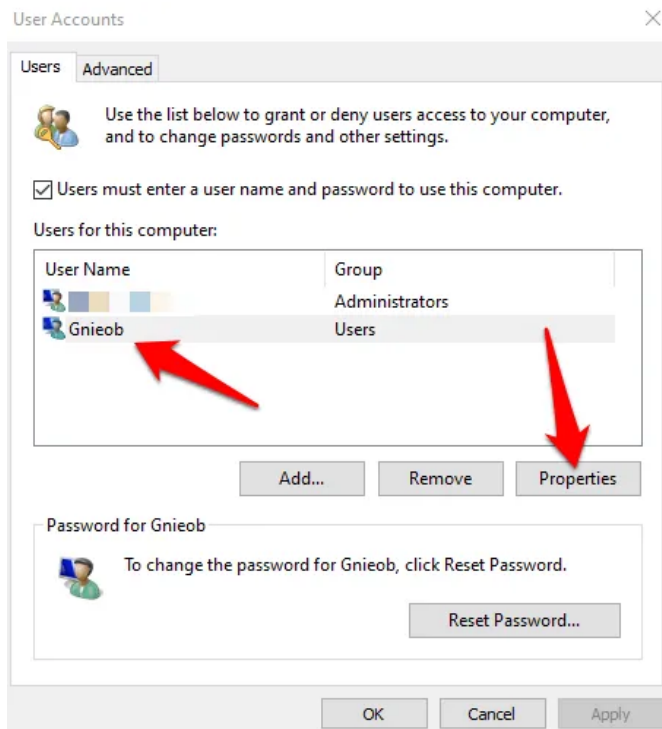
How To Change Windows 10 Administrator Using User Accounts

You can set an account to Administrator type using the **netplwiz** command or User Accounts.

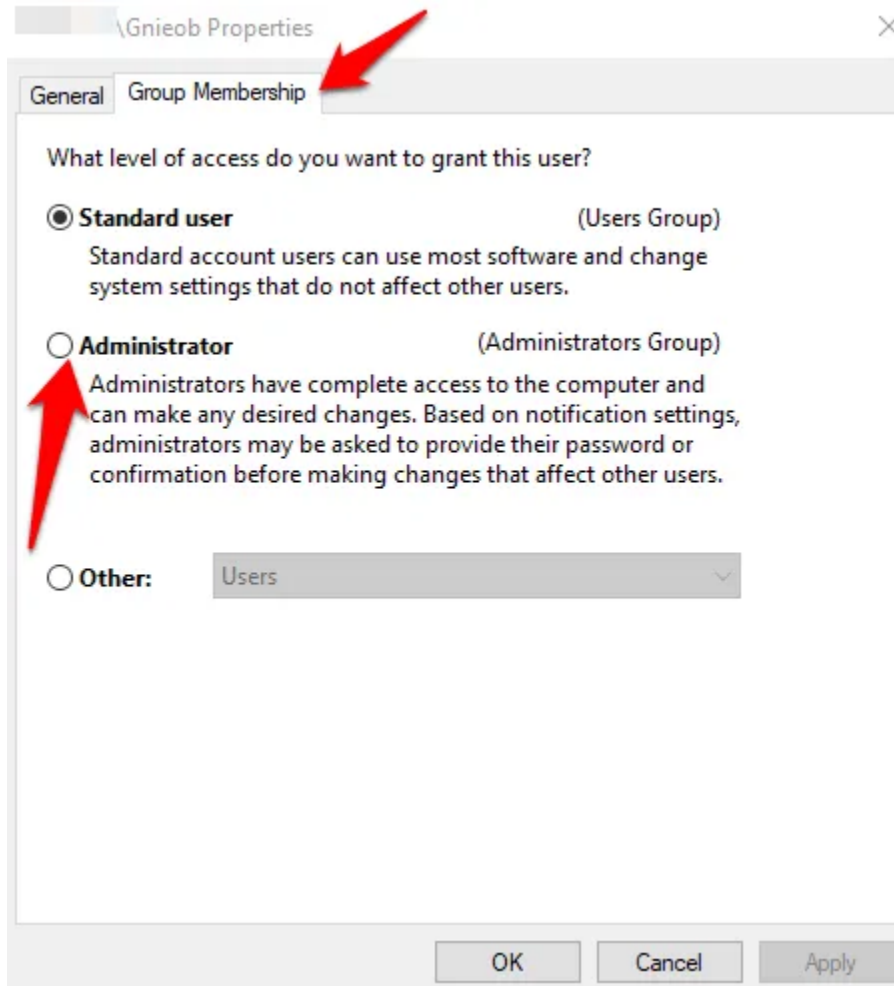
1. To do this, click Start and type **netplwiz** in the search box. Click the result to open **User Accounts**.



2. Click on the account you want to change and select **Properties**.



- Next, click the **Group Membership** tab. Select the **Standard user** or **Administrator** account you'd like to change. You can also choose different user groups under the **Other** membership option. Here, you can select **Remote Desktop users**, **Guests**, **Power Users**, **Cryptographic operators**, and **backup operators** among others.

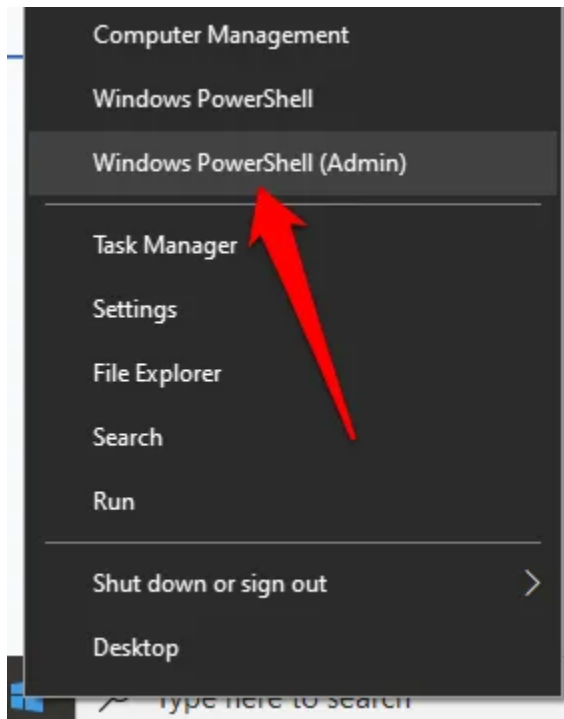


- Click **Apply** > **OK**. Repeat this action to confirm and then restart your device to apply the changes and use your new administrator account.

How To Change The Administrator On Windows 10 Using PowerShell

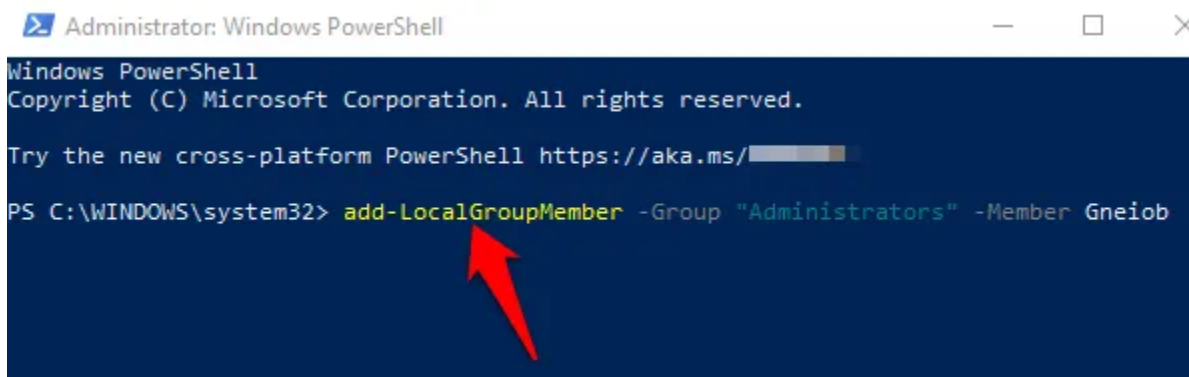
PowerShell is a command line shell that allows system administrators to automate tasks like creating new users, passwords, and more so that they don't have to waste time on such mundane things (read more in our [guide on Using PowerShell For Home Users](#)).

1. To change the administrator on Windows 10 using PowerShell, right-click **Start > Windows PowerShell (Admin)**.



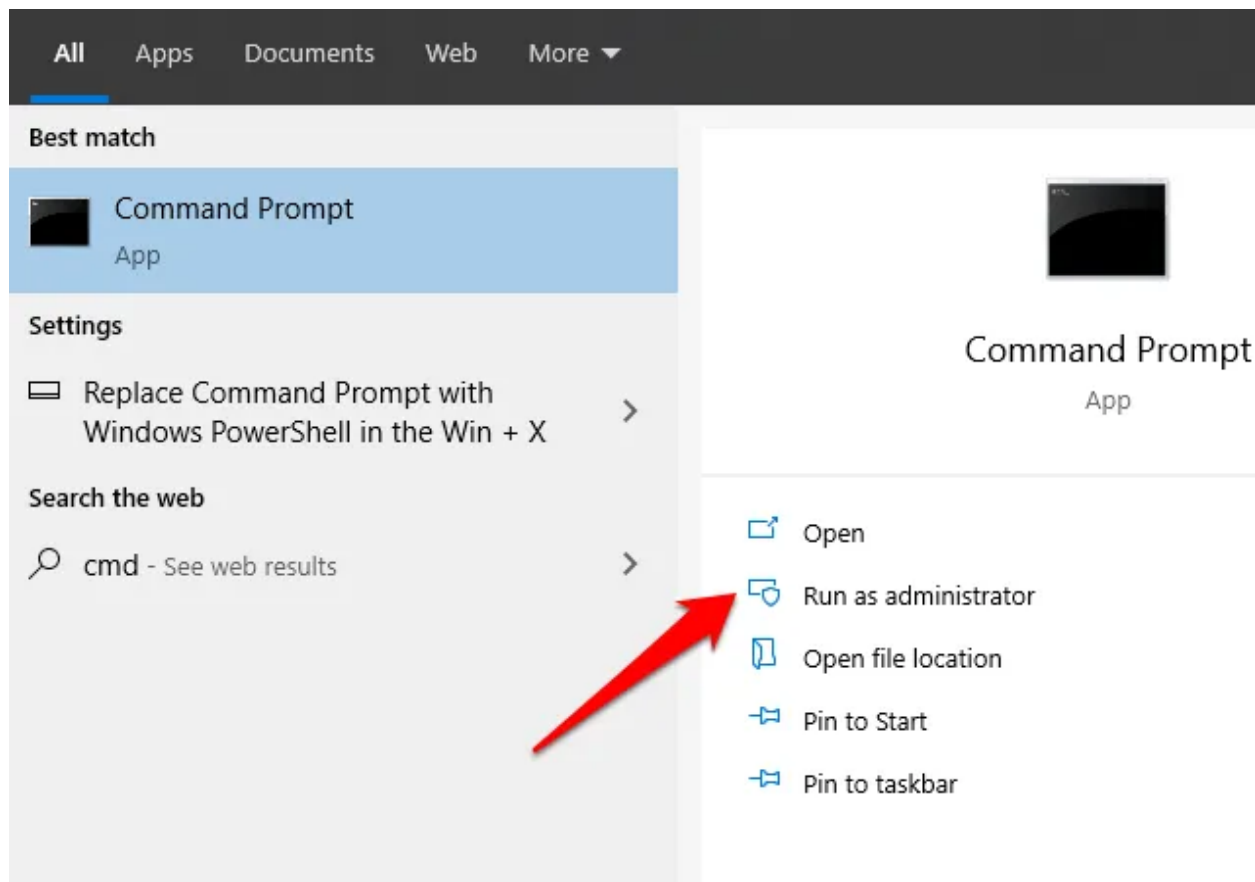
2. Type this command to change the account to administrator: **add-LocalGroupMember -Group "Administrators" -Member "ACCOUNT-NAME"**

Note: Replace "Account-Name" with the actual name of the account you're changing to administrator.



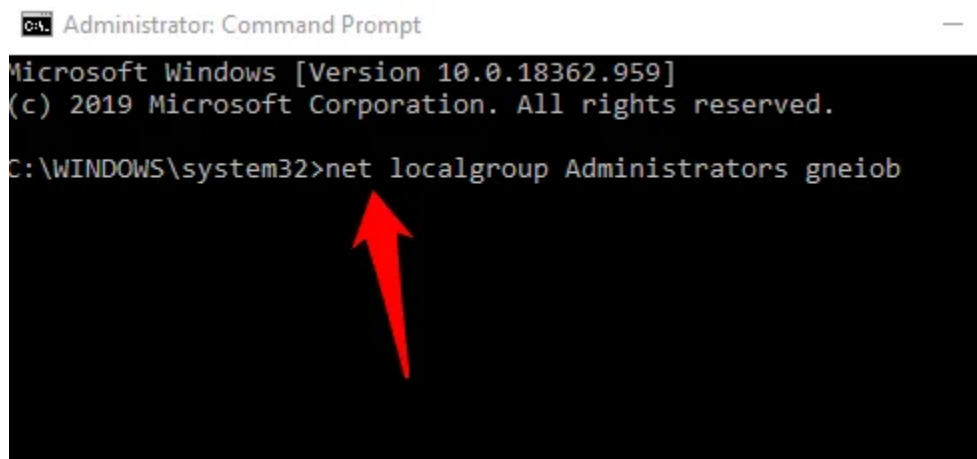
How To Change The Administrator On Windows 10 Using Command Prompt

1. Click **Start** and type **CMD** in the search box. Select **Command Prompt > Run as administrator**.



2. Type this command to change the account type to Administrator: **net localgroup Administrators "ACCOUNT-NAME" /add**. Press **enter**.

Note: Remember to replace "Account-Name" with the actual name of the account you're changing to administrator.

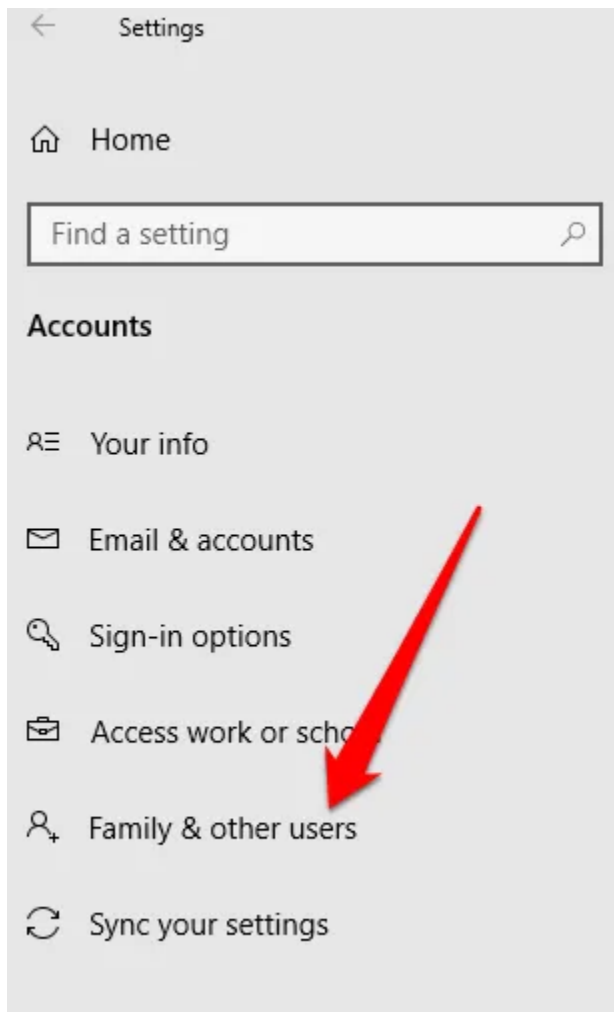


3. To view the account type, enter this command: **net user ACCOUNT-NAME** and press **Enter**. Once you complete these steps, the account will load with the administrator privileges next time the user signs in to the device.

Create a Local Administrator Account In Windows 10

You can also create a local user or administrator account in Windows 10 and give it administrator permissions. Users of Windows 10 version 1803 and later can add security questions, which allows them to reset their local account passwords anytime.

1. To create a local user account and give it administrator privileges, click **Start > Settings > Accounts** and select **Family & other users**.



2. Select **Add someone else to this PC**.

Family & other users

Add your family so everybody gets their own sign-in and desktop. You can help kids stay safe with appropriate websites, time limits, apps, and games.



Add a family member

[Learn more](#)

Other users

Allow people who are not part of your family to sign in with their own accounts. This won't add them to your family.



Add someone else to this PC

3. Next, enter a username and password.

Create an account for this PC

If you want to use a password, choose something that will be easy for you to remember but hard for others to guess.

Who's going to use this PC?

Make it secure.

Next

Back

4. Choose the security questions you prefer to answer in case you lose or forget your password, and click **Next**.

Microsoft account

Gnieob

Make it secure.

■ ■ ■ ■ ■

■ ■ ■ ■ ■

 In case you forget your password

What was your childhood nickname? ▼

■ ■ ■ ■ ■

What's the name of the city where you were born? ▼

■ ■ ■ ■ ■

What's the name of the first school you attended? ▼

■ ■ ■ ■ ■

Enter a username and password, and type a password hint or select security questions. Click **Next** once you're done, and then use any of the methods above to change the user account to an administrator.