

How to Fix When Windows Won't Shut Down

One of these solutions will do the trick

Unless you have an issue on your computer, your [Windows computer should shut down](#) with the click of an option. If Windows won't shut down despite repetitive attempts, there's probably a problematic element on your machine.

Sometimes it's a bit tricky to find out exactly what's causing the Windows shut down issue on your computer. It may be an app, a system issue, or something else. Regardless, there are multiple methods you can try and apply and one of these should likely fix the issue for you.



Force Shut Down The Computer

If the normal Start Menu shut down option doesn't work for you and Windows's won't shut down, you may need to use the force shutdown method. It forces your computer to turn off regardless of what state it is in.

On most computers, all you need to do to force shut down the computer is to press and hold down the **Power** button for a few seconds. Keep it held down until you see your machine powering off.



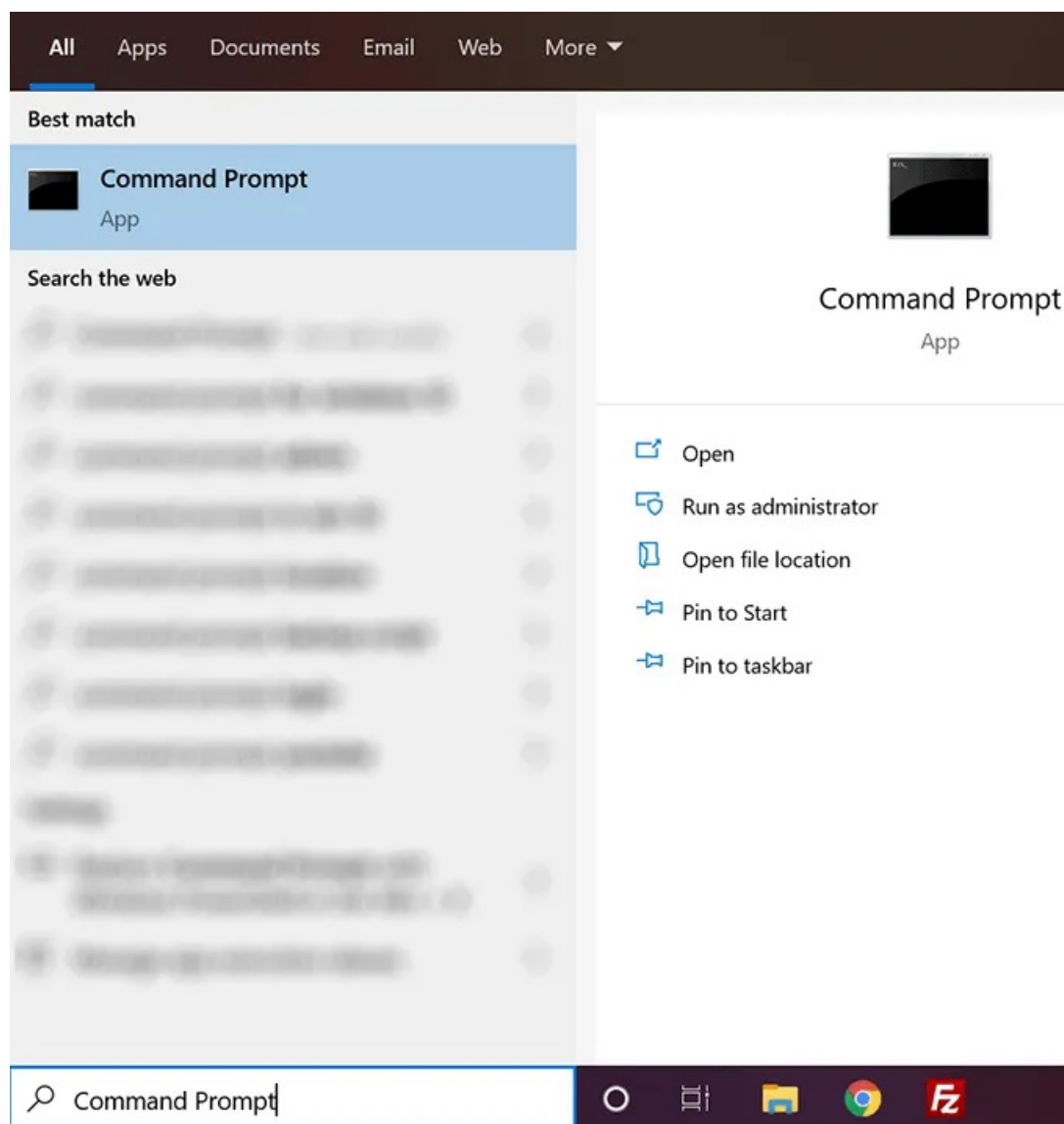
Once that is done, you can press the same **Power** key to turn your machine back on.

Windows provides you with [multiple ways to shut down a computer](#). If the one that you normally use doesn't work, you can always try a different method to turn your computer off.

Use Command Prompt To Shut Down Windows

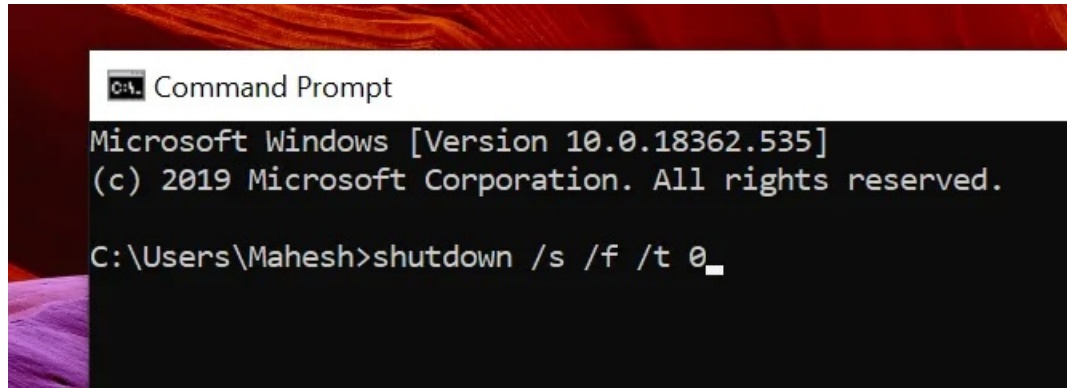
One of the common ways to shut down a Windows computer is to use a command in the Command Prompt utility. Execute a single-line command and it'll make sure to power your machine off.

- Use the search box to search for **Command Prompt** and click on it when it appears in the search results.



- When it opens, type in the following command and press **Enter**. Make sure you've saved your work in your apps before running the command.

shutdown /s /f /t 0



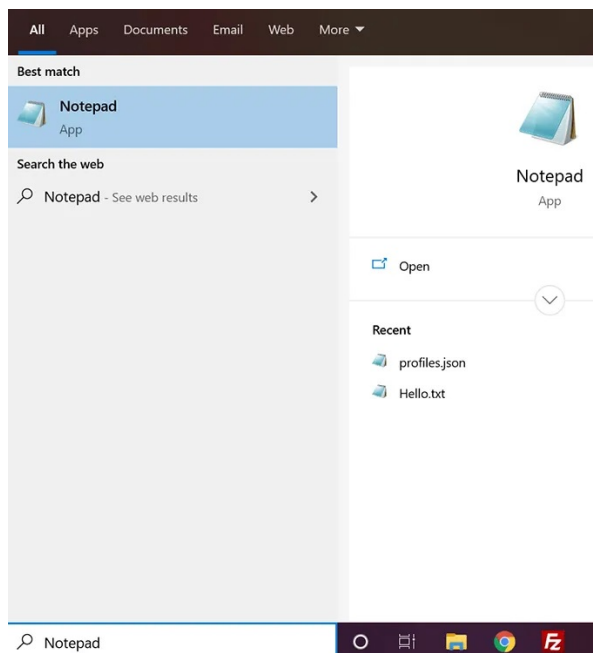
- Your computer will immediately turn off.

Create a Batch File To Shut Down Windows

If the above method successfully turned off your computer, you'll want to stick to it to shut down your machine whenever you want. You can actually save yourself from the hassle of typing in the command every time by creating a batch file.

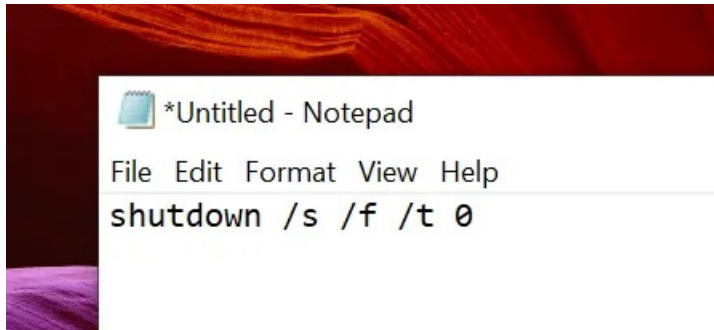
You can then turn off your computer with a single-click.

- Use the Cortana search box to search for **Notepad** and click on it when you see it.

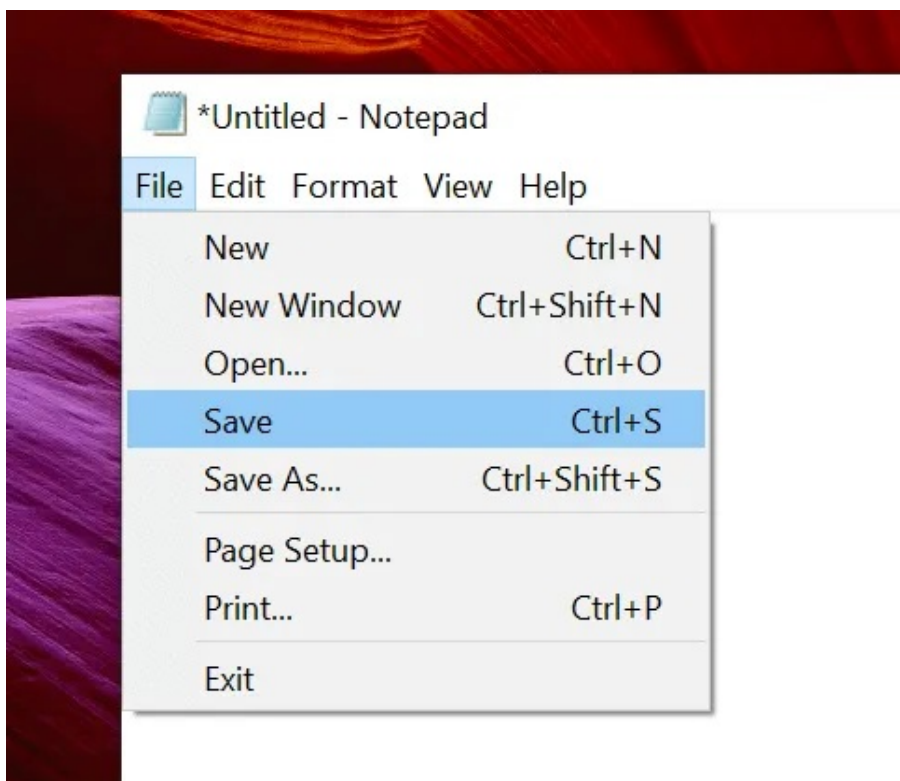


- You'll use the same command you used in the Command Prompt utility in Notepad. Type in the following command.

shutdown /s /f /t 0

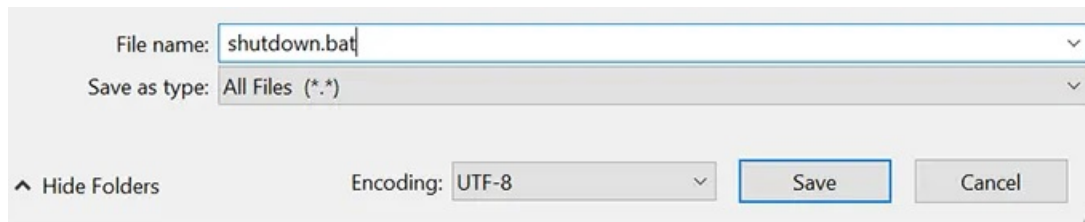


- Click on the **File** menu at the top and select the **Save** option. You'll be saving it as an executable batch file on your PC.

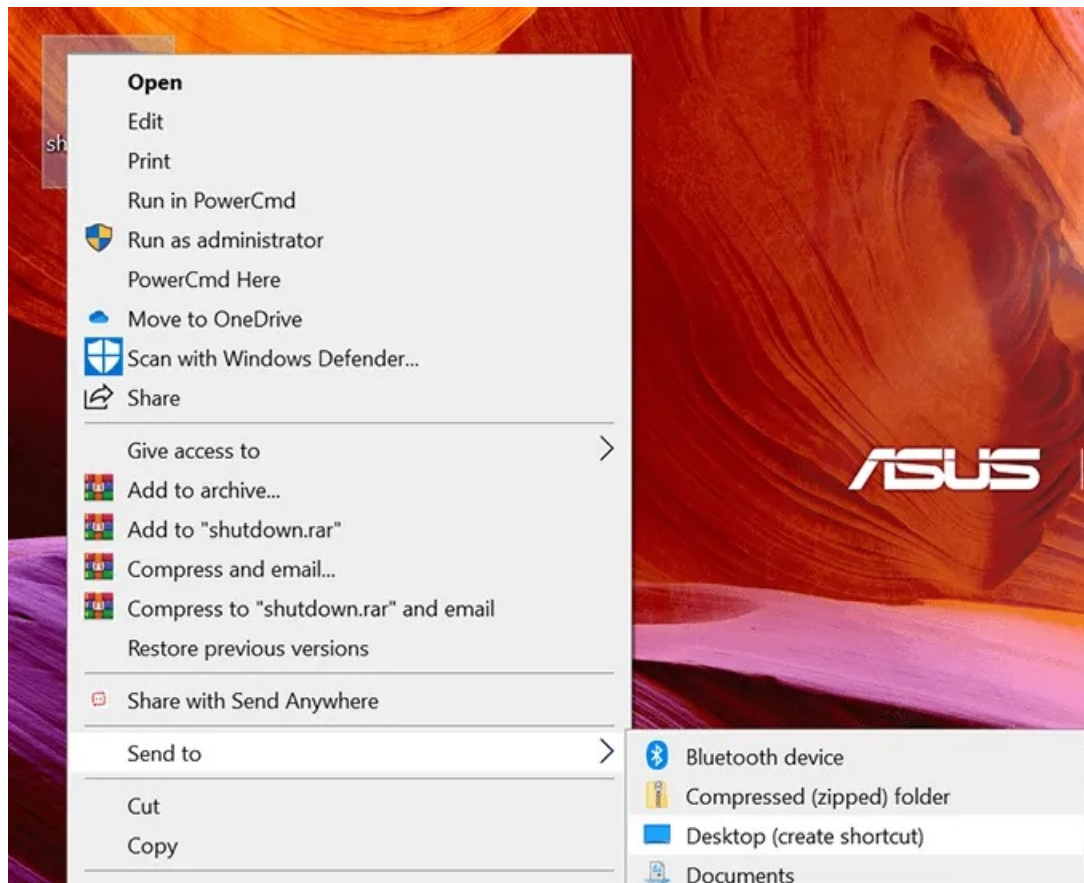


- On the following screen, choose your **Desktop** as the location to save the file. It'll be easier for you to run the file from your Desktop than anywhere else.

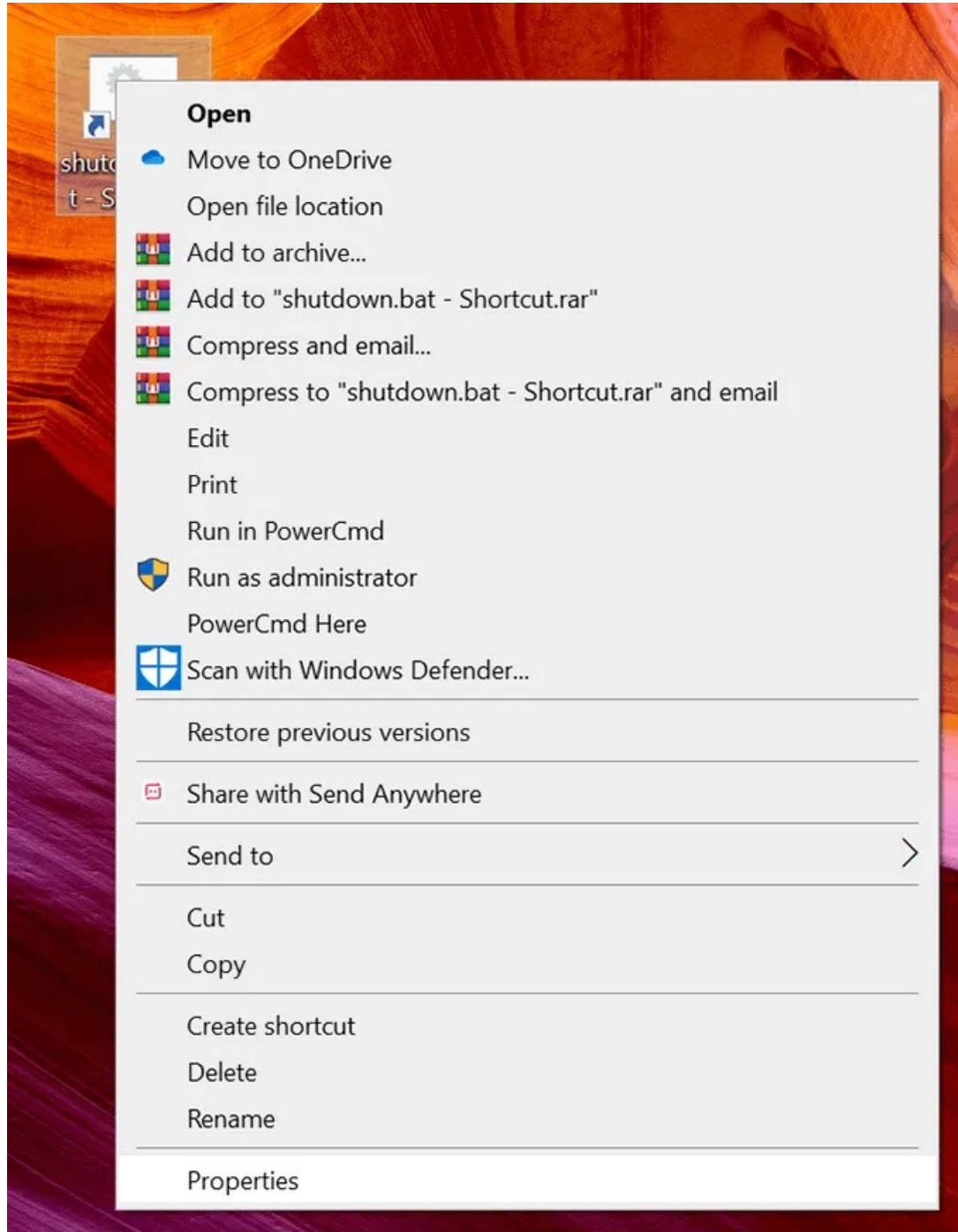
- Enter a name for your file followed by a dot and then bat. It should look something like **shutdown.bat**.
- From the **Save as type** box, choose **All Files** as you don't want to save it as a text file.
- Then click on the **Save** button to save the file.



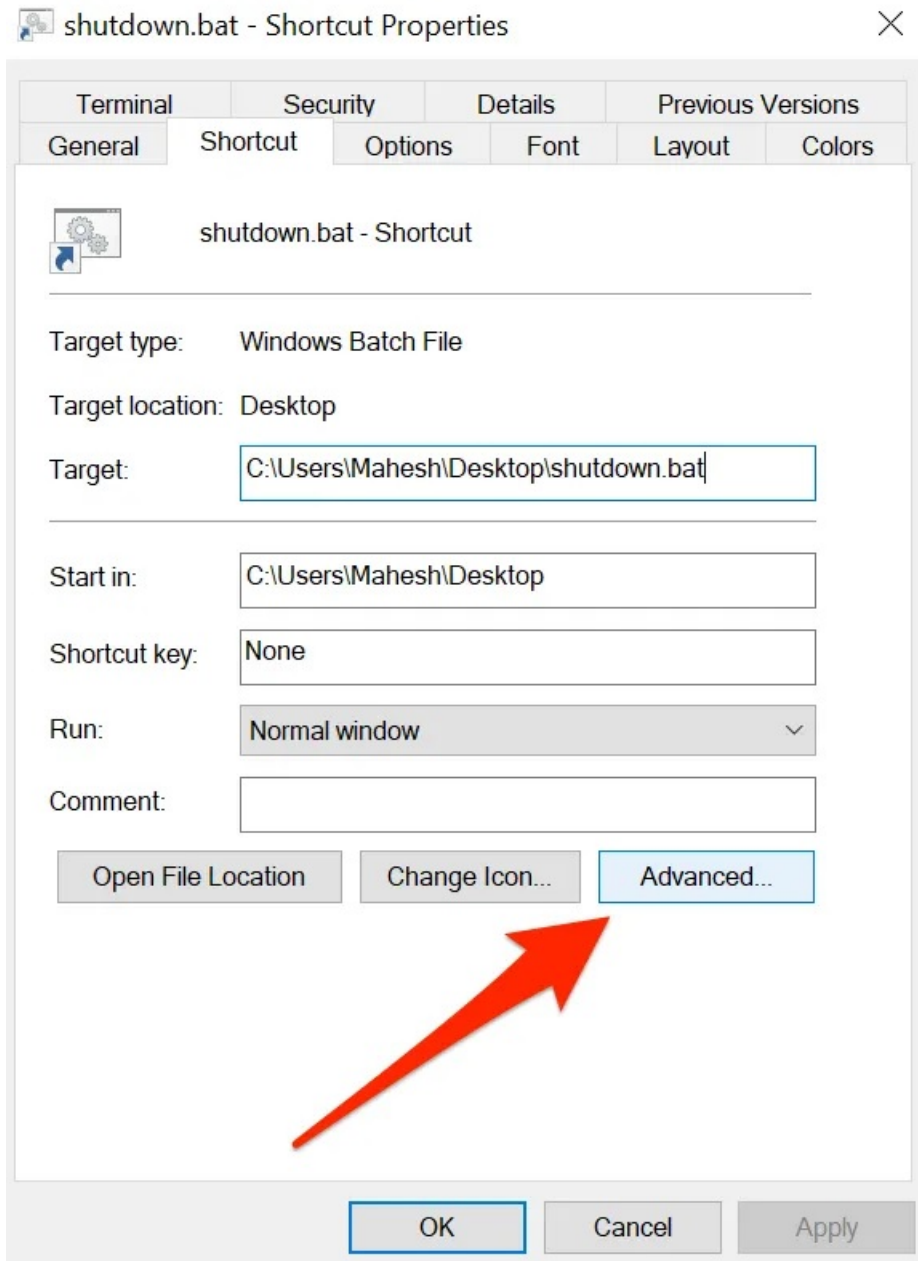
- You can right-click on the file and select **Run as administrator** to shutdown your PC. This step can also be eliminated by setting the file to always run as admin.
- Right-click on the file and select **Send to** followed by **Desktop**. It'll create a shortcut on your Desktop.



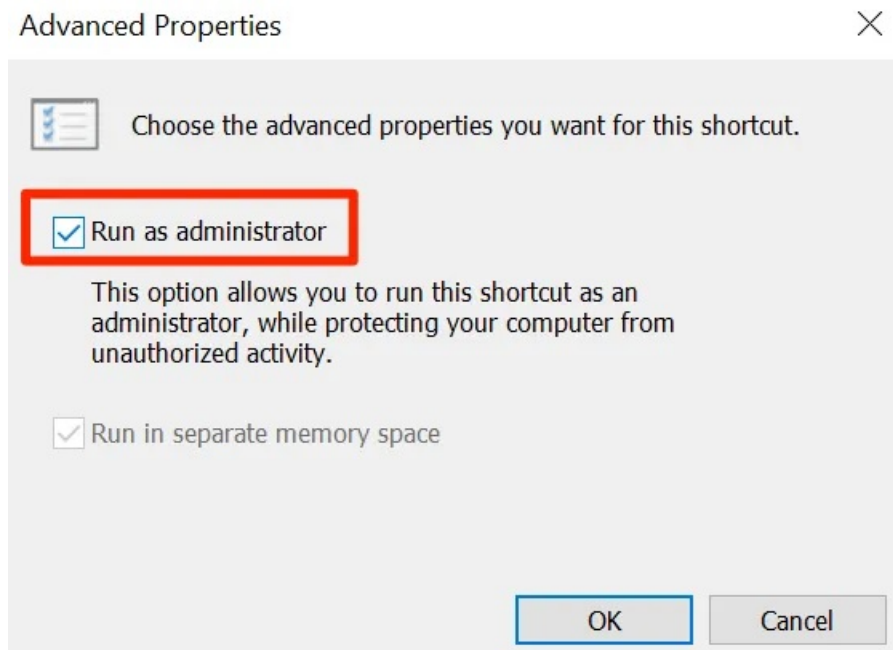
- Right-click on the newly created shortcut and select **Properties**.



- Make sure you're inside the **Shortcut** tab. Then find and click on the **Advanced** button.



- Checkmark **Run as administrator** and click on **OK**.



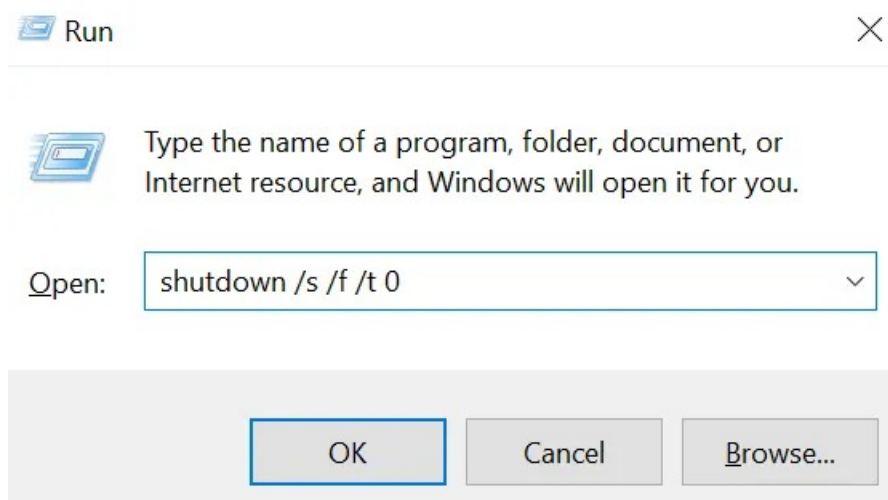
You can double-click on the file each time you want to turn off your computer.

Use The Run Box To Shut Down Windows

You can use the above command in the Run box as well.

- Press the **Windows + R** keys at the same time.
- Type in the following command and hit **Enter**.

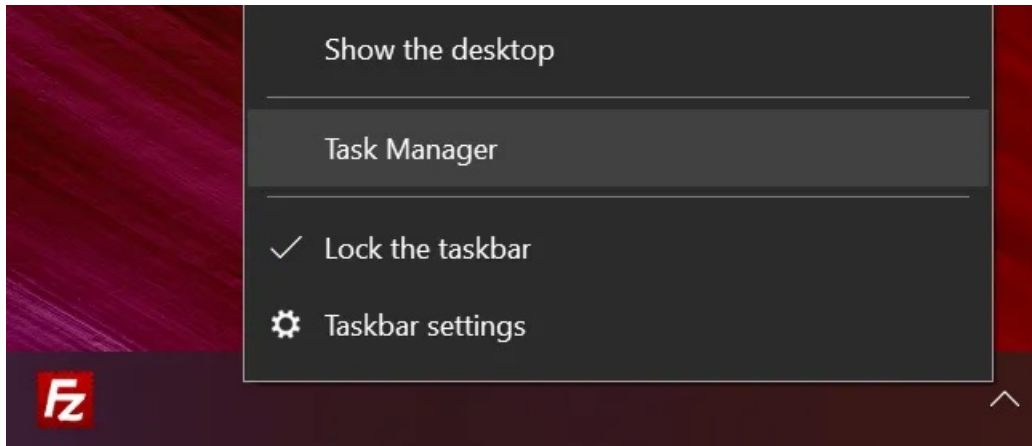
shutdown /s /f /t 0



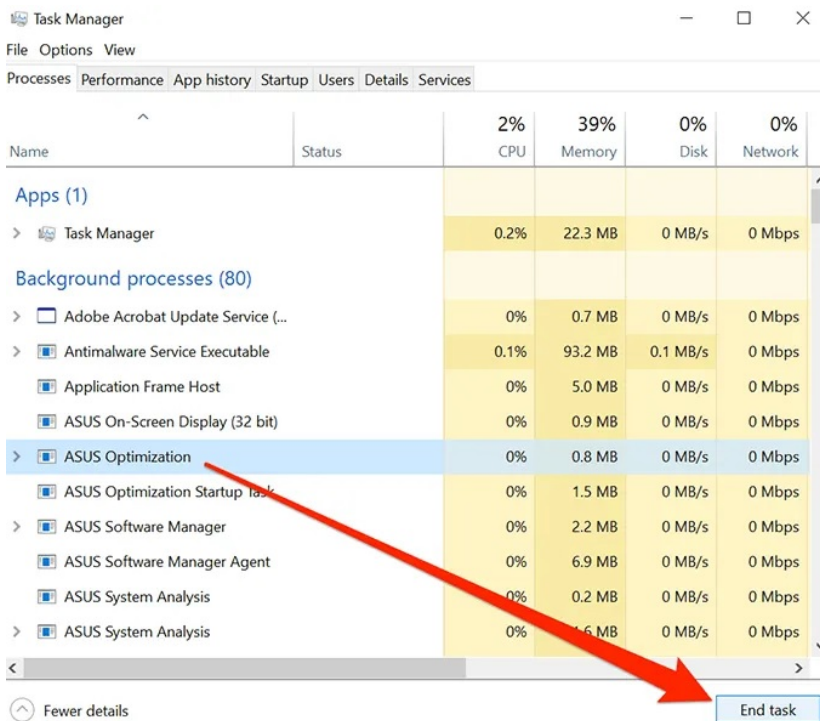
Quit The Open Apps And Kill Processes To Shut Down The Computer

One of the possible reasons Windows won't shut down is because you have certain apps open on your machine. [Closing them all](#) should likely fix the issue for you.

- Right-click on your taskbar at the bottom and select **Task Manager**.



- Go to the **Processes** tab if you aren't already there. Select each process that you identify as an app and click on the **End task** button. You need to do it for each process in the list.

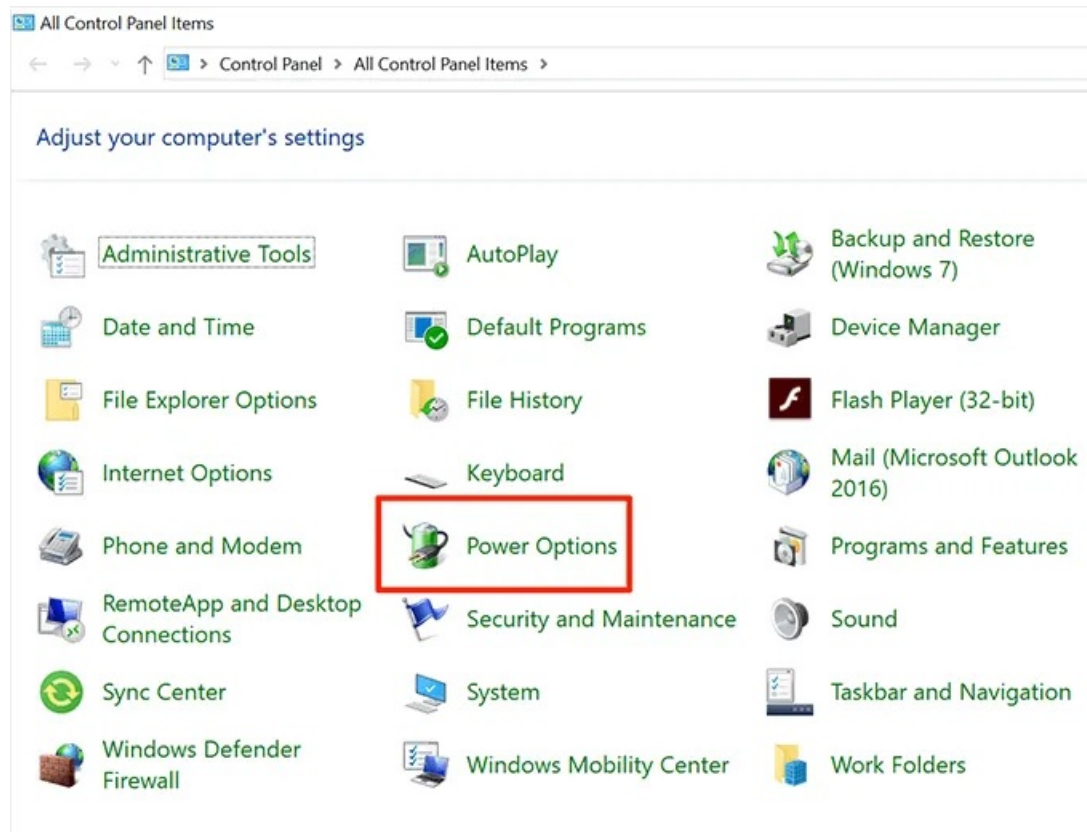


It'll close the app by killing its process. You can then use the standard shutdown method to shut down your computer.

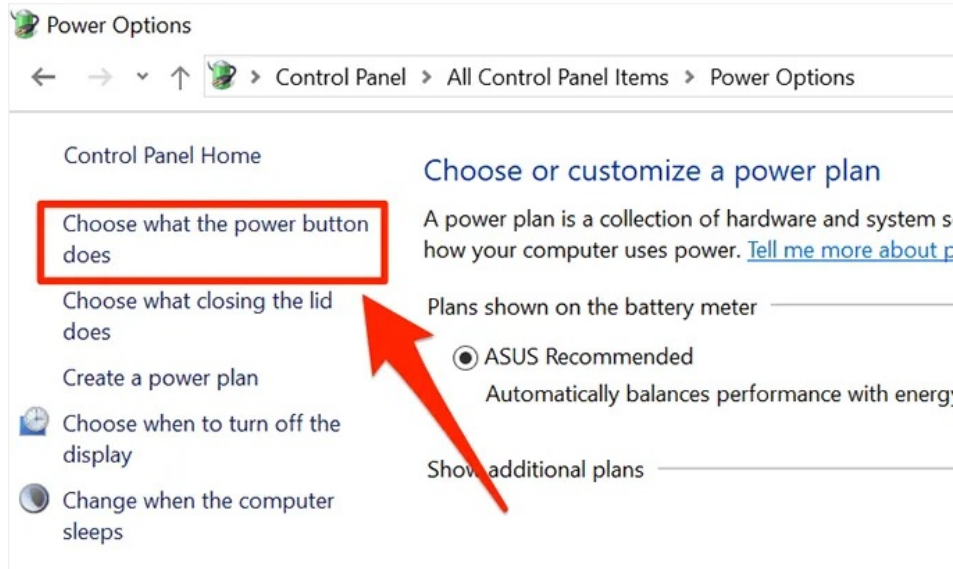
Disable Fast Startup To Fix Windows Shutdown Issue

[Fast Startup is one of the features](#) involved with your computer's boot-up process. Disabling it might resolve the issue for you.

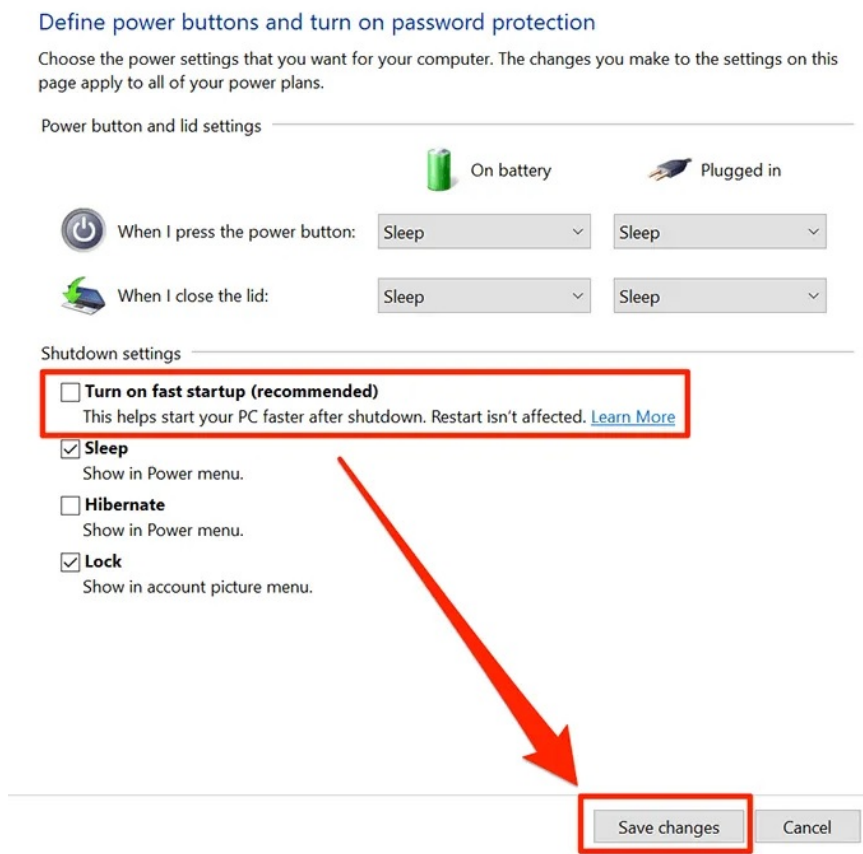
- Launch **Control Panel** and select the **Power Options** option.



- Select **Choose what the power button does** in the left sidebar.



- Untick the option that says **Turn on fast startup (recommended)**, and click **Save changes** at the bottom.

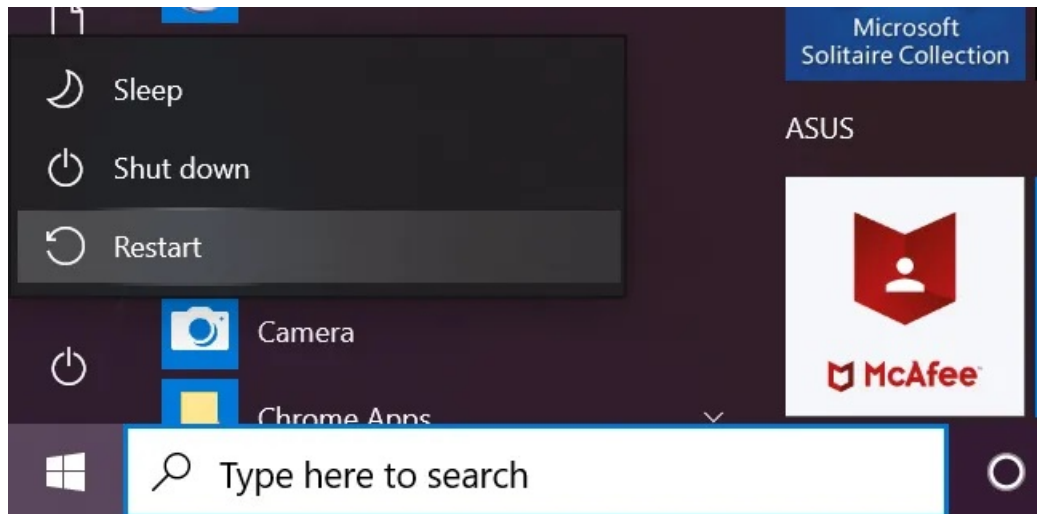


You may now try shutting down your computer to see if it works.

Reboot Your Windows Computer Instead

If shutting down doesn't work, you can try rebooting your computer instead. Once it reboots, you can try to shut down your machine.

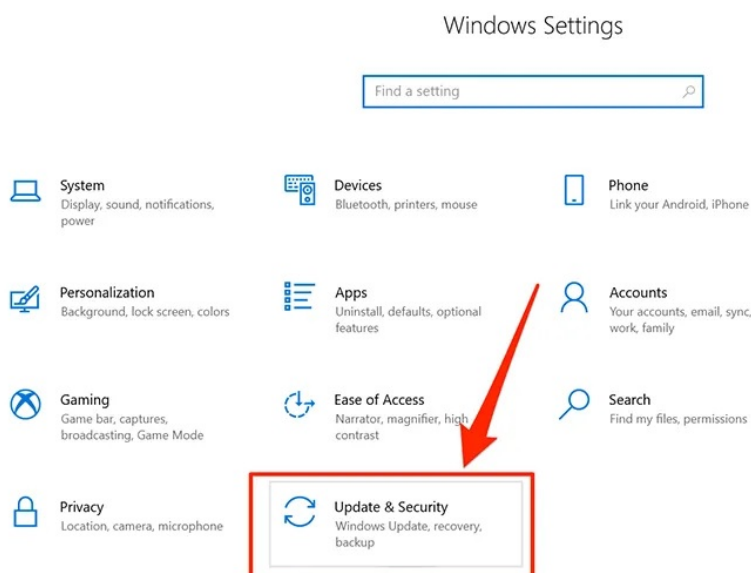
- Click on the Start Menu icon, select the power icon, and choose **Restart**.



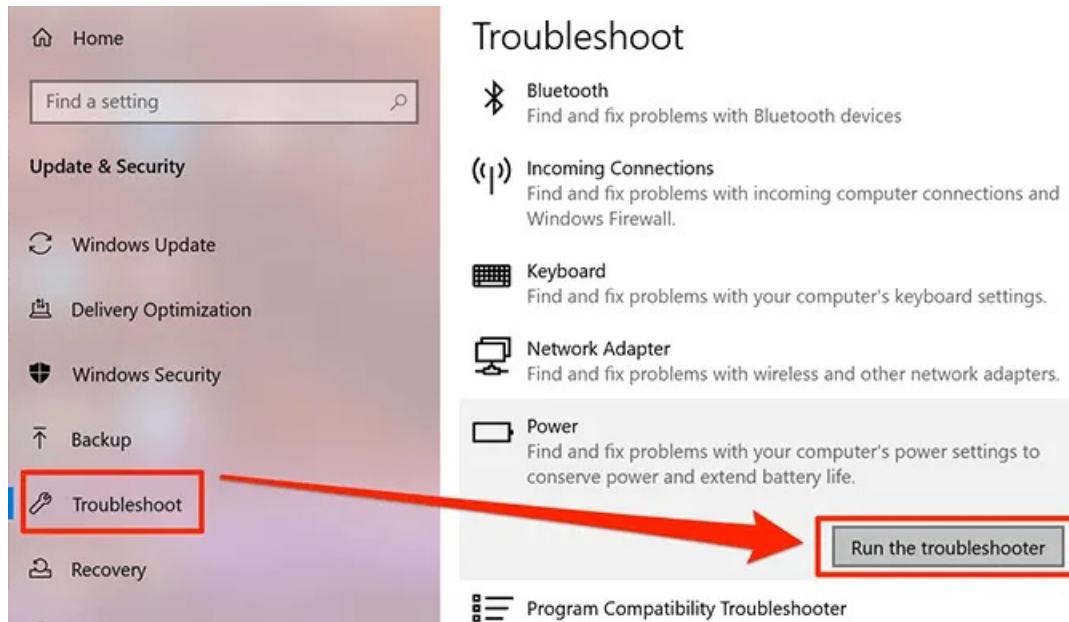
Use the Troubleshooter When Windows Won't Shut Down

Lastly, if nothing works, you can troubleshoot the issue with Windows Troubleshooter.

- Open the **Settings** app and click on **Update & Security**.



- Select **Troubleshoot** in the left sidebar, click on **Power** on the right-hand side pane, and choose **Run the troubleshooter**.



- Let the troubleshoot run, detect issues, and offer you possible fixes to those issues.

Your Windows shutdown issue should be gone once you've applied the recommended fixes.

Article courtesy of: <https://helpdeskgeek.com/help-desk/how-to-fix-when-windows-wont-shut-down/>